

## Step 2 Software Installation (for USB only)

1. Power on your PC. At startup, Windows will detect the cable modem. The *Found New Hardware* screen appears, followed by the *Add New Hardware Wizard* screen.
2. Insert the SpeedStream CD into the PC's CD-ROM drive and click **Next**.
3. If you use Windows 98:
  - a. Select *Search for the best driver for your device (Recommended)*. Then click **Next**.
  - b. Check the *CD-ROM drive* check box and verify that the CD is in the CD-ROM drive. Click **Next** to have Windows search for the necessary driver files.
  - c. Select *the updated driver (Recommended) SpeedStream USB Cable Modem* and click **Next**.
  - d. Click **Next** when prompted.If you use Windows Me:
  - a. Make sure the driver CD is in the CD-ROM drive and select *Automatic search for a better driver (Recommended)* and click **Next**.If you use Windows 2000:
  - a. Select *Search for a suitable driver for my device (Recommended)*. Click **Next**.
  - b. Check the *CD-ROM drive* check box and verify that the CD is in the CD-ROM drive. Then click **Next**.
  - c. Click **Next** again to install the driver files.If you use Windows XP:
  - a. Choose *Install the software automatically (Recommended)*. Click **Next** to continue.
  - b. Select *Search for the best driver in these locations*. Then select *Include this location in the search*. Verify that the location you type matches the location of the driver files for the cable modem. Click **Next** to continue.
4. The computer automatically installs the necessary driver files.
5. If a screen appears prompting you for your windows CD, you must insert the Windows CD so that it can copy the remaining files. In the "Copy files from:" dialog box, point Windows to the path of the CD-ROM drive. Click **Next**
6. Click **Finish** to complete the installation.
7. If a screen appears prompting you to restart your computer, choose **Yes**.
8. Make sure that your Internet connection is set up appropriately. Refer to Appendix B

## Step 3 Service Activation

After your cable modem is installed, you will need to contact your cable Internet service provider to activate your account. Normally, you will be asked to provide what is called a MAC address, which is printed on a bar code label on the bottom of the cable modem.

## Appendix

### A. Verifying TCP/IP Setup

The following procedure applies to Windows 95, 98, 98SE, and Me. For Windows NT, 2000, or XP, please refer to your Microsoft Windows manual.

1. Right-click on the *Network Neighborhood* icon on your desktop, and then select **Properties**.
2. Select **TCP/IP-> Ethernet Adapter**
3. Ensure *Obtain an IP Address Automatically* is selected. The DHCP server in the SpeedStream cable modem will provide an IP address for the PC.
4. Click **OK** twice, then restart your PC even if no changes were made.

### B. Internet Connection Set-up

1. Select *Start Menu-> Settings-> Control Panel-> Internet Options*.
2. Select the *Connections* tab and click the **Setup** button.
3. Select *I want to set up my Internet Connection manually or I want to connect through a Local Area Network (LAN)* and click **Next**.
4. Select *I connect through a Local Area Network (LAN)* and click **Next**.
5. Uncheck all boxes on the *Local Area Network Internet Configuration* screen and click **Next**.
6. Follow the remaining on-screen prompts until the wizard has finished.

## LED Troubleshooting

	ON	OFF	BLINKING
POWER	Unit is ON	Unit is OFF	N/A
USB	USB cable is connected properly from the modem to the PC	USB cable is not connected properly from the modem to the PC	Data is being transmitted or received from the cable modem over the USB cable
ENET	Ethernet cable is connected properly from the modem to the PC	Ethernet cable is not connected properly from the modem to the PC	Data is being transmitted or received from the cable modem over the Ethernet cable
SEND	Data is transmitting from the cable modem to the cable network	Data is not currently being transferred from the cable modem to the cable network	Data is transmitting from the cable modem to the cable network.
RECV	Data is being received from the cable network to the modem	Data is not currently being transferred from the cable network to the cable modem	Data is being received from the cable network to the modem
SYNC	Modem has established a connection with the cable network	Modem has not established a connection with the cable network	N/A
READY	Modem has finished initialization and is ready to function	Modem has not yet finished initialization and is not ready to function	N/A

Technical Support for North America is available 24 hours a day, 7 days a week, by phone, email or online:

Phone: 1-877-823-6722

Email: support@speedstream.com

Online: <http://www.support.speedstream.com>

## SIEMENS

For more information regarding SpeedStream® products visit: [www.speedstream.com](http://www.speedstream.com).

Efficient Networks, Inc.

A Siemens Company  
4849 Alpha Road  
Dallas, TX 75244

©2002 Efficient Networks, Inc. A Siemens Company. All rights reserved. Efficient Networks, its logos, "Live a Broadband Life" and SpeedStream are registered and unregistered trademarks of Efficient Networks, Inc. All other brand names and trademarks are held by their respective companies. Efficient Networks reserves the right to make changes to product specifications at any time without notice.

# SIEMENS

007-0312-002



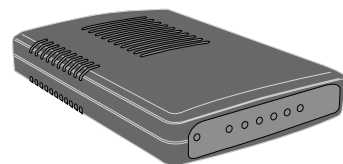
**SpeedStream® 6101**  
Cable Modem

## Quick-Start Guide

## Before you begin:

This guide covers only the most common situations. Please refer to the full User's Guide on the CD-ROM for any special circumstances.

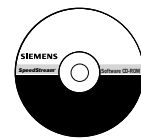
### Package Contents



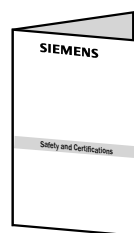
SpeedStream cable modem



Quick start guide



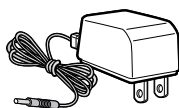
CD containing documentation and USB driver



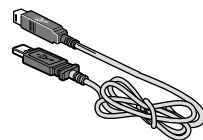
Safety and Certifications



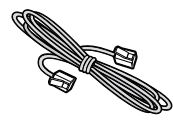
Extended warranty card



Power supply



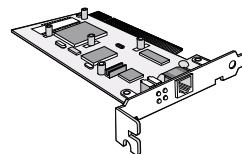
USB cable



Ethernet cable (RJ-45)

### You will also need:

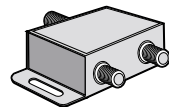
Installation of your cable modem will require one or more of the following items which can be purchased at most electronics retailers or may be supplied by your service provider.



Ethernet adapter  
(Your computer may already have this installed)



Coaxial cable



Cable line splitter  
(Optional)

### Requirements:

- Cable internet connection (provided by your cable company)

#### • For Ethernet connection:

- A PC running Windows 95 (or later) operating system or a Macintosh computer running system 7.6 (or later) operating system
- An available Ethernet port on your PC, or an available PCI slot for installing an Ethernet network interface card

#### • For USB Connection:

- A PC running Windows 98 Second Edition (SE), Windows Me, Windows 2000, or Windows XP.
- CD or diskettes for Windows 98 SE, Windows Me, Windows 2000, or Windows XP.
- An available USB port on your PC.

*NOTE: The USB setup does not support the Macintosh Operating System, Windows 98 First Edition, or Windows NT.*

## Step 1 Hardware Installation

*NOTE: Do not use both USB and Ethernet ports simultaneously, only one can be used at a time. If you need to switch between the ports, you must switch the cable modem off before doing so.*

Choose either the USB or Ethernet port for installation.

### Need help choosing?

#### Ethernet Points

- Fast and easy installation
- Supports any Windows operating system and Macintosh
- No software required
- Can be used with home networking equipment to share cable Internet service between multiple computers

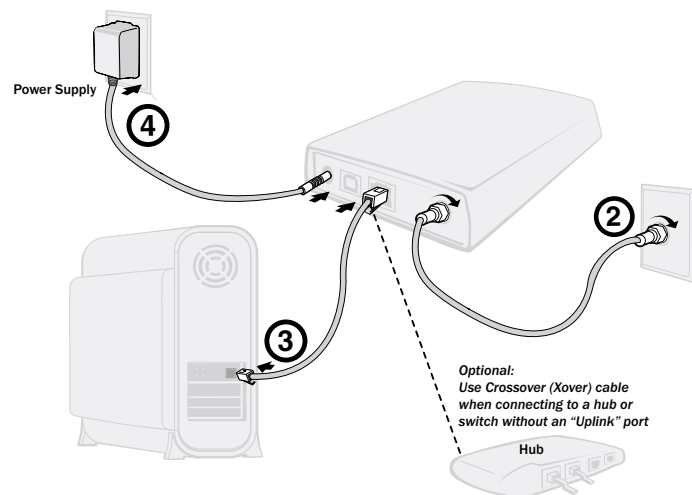
#### USB Points

- Fast and easy installation
- No need to configure Ethernet NIC (network interface card)
- Allows only one computer to connect to the cable modem
- Requires driver software installation

### To Install with Ethernet Connection

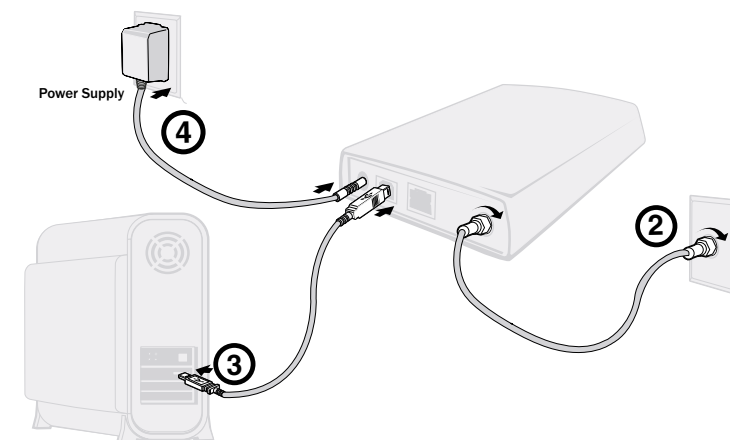
*NOTE: Ethernet connection installation does not need any software. Make sure that your computer has an Ethernet port available. If no Ethernet port is available, you will need to install an Ethernet NIC (Network Interface Card). Refer to your PC user manual for installation procedures.*

1. Power off the computer.
2. Connect one end of the coaxial cable (not included) to the cable modem's cable connector. Connect the other end of the coaxial cable to the cable wall outlet. Be sure not to bend or over tighten the cable as this may strain the connector and cause damage. If you plan to connect the cable modem and television to the same wall outlet, you must use a cable line splitter (not included).
3. Connect one end of the Ethernet cable to the cable modem's Ethernet port and the other end of the cable to the Ethernet port on the PC.
4. Plug the cable modem's power adapter into the cable modem's power jack and into a wall outlet or surge protector.
5. If the POWER, ENET, SYNC, and READY indicator lights are solidly lit, the cable modem is working properly.
6. Verify that TCP/IP is installed properly. Also make sure that your Internet connection is set up appropriately. Refer to Appendix A and B on the back of this guide.



### To install with USB Connection

1. Power off the computer.
2. Connect one end of the coaxial cable (not included) to the cable modem's cable connector. Connect the other end of the coaxial cable to the cable wall outlet. Be sure not to bend or over tighten the cable as this may strain the connector and cause damage. If you plan to connect the cable modem and television to the same wall outlet, you must use a cable line splitter (not included).
3. Connect one end of the USB cable to the cable modem's USB port and the other end of the cable to the USB port on the PC.
4. Plug the cable modem's power adapter into the cable modem's power jack and into a wall outlet or surge protector.
5. You are now ready to install the driver software.



Hardware installation is complete. See reverse for USB driver software installation procedures.